

-- Fatal Crashes January 28 – February 3, 2025:

-1/31/25: S. Burlington, I89 off ramp. Single pickup crash. Driver fatality. Seatbelt usage unknown.

-2/3/25: Westminster, I91. SUV vs. Plow truck. SUV driver fatality. Seatbelt used.

-- **2025 Fatalities: 7** Total – **6** vehicle operators, **0** passengers, **1** pedestrian, **0** bicyclists

As of February 3 in each calendar year shown:		
Year	Fatalities (People)	Fatal Crashes
2025	7	7
2024	2	2
2023	2	2
2022	4	4
2021	3	3

Fatal Crash Data	2025*	2024*	2023	2022	2021	2020
Total Fatal Crashes	7	53	63	73	69	58
Total Fatalities (People)	7	59	69	76	74	62
Double Fatality Crashes	0	4	4	3	5	4
Triple Fatality Crashes	0	1	1	0	0	0
Quadruple Fatality Crashes	0	0	0	0	0	0
Operators Suspected as Driving under the Influence of Alcohol Only	0	5	10	11	10	11
Operators Suspected as Driving under the Influence of Drugs Only	0	12	23	20	18	14
Operators Suspected as Driving under the Influence of both Alcohol & Drugs	0	13	8	13	12	6
Active Cannabis - Delta 9 THC Confirmed**	0	12	14	15	25	14
Operators Suspected of Speeding	2	21	18	21	33	15
Operators with Suspended License/ No License	0	11	14	12	7	13
Junior License Operators involved in fatal crashes	0	4	1	2	5	2
"Older Drivers" involved in fatal Crashes (Older Driver is defined as any person age 65 or older.)	3	7	24	25	19	15
Crashes involving a Large Truck/Bus	1	2	5	11	4	3
Motorcyclist Fatalities	0	6	18	14	16	10

*2024 data is as of the date of this report. These numbers are subject to change.

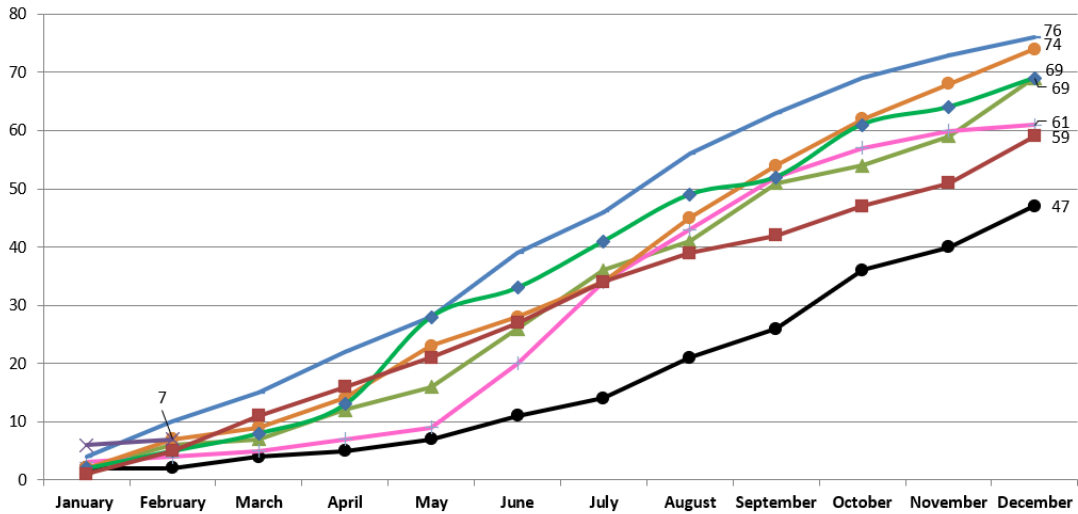
**Active Cannabis - Delta-9 THC Confirmed is counted in the number of operators that had drugs only or alcohol & drugs.

***None of the identified groups above are implicated as being "at fault"

Fatalities by Vehicle Type and Restraint/Safety Equipment Used							
Road User Type	Restraint/Safety Equipment	2025	2024	2023	2022	2021	2020
Motor Vehicle Occupant	Unbelted	2	20	24	31	28	24
	- Driver	2	16	18	25	25	19
	- Passenger	0	4	6	6	3	5
	- UTV Driver	0	0	0			
	Belted	3	17	17	18	18	17
	- Driver	3	15	14	17	13	12
	- Passenger	0	2	3	1	5	5
	Improper Belt Use/Child Restraint	0	0	1	1		0
Motorcyclist/ATV	Wearing Helmet	0	7	14	14	13	10
	Non-DOT Compliant Helmet/Improper	0	0	3		2	0
	No Helmet	0	1	1	2	2	2
Vulnerable Users	Pedestrians	1	6	5	6	8	8
	Bicyclists	0	2	1	1		1
Unknown	Unknown Belt/Helmet Use	1	6	3	3	3	0
% Unbelted*		40%	54%	60%	64%	60%	59%
Total Fatalities		7	59	69	76	74	62

*Of all fatalities: only occupants in vehicles equipped with seatbelts are used in the calculation for unbelted percentage. Excludes: motorcycles, ATVs, pedestrians, bicyclists and unknowns. (Sum of Belted" & "Unbelted", divided into sum of "Unbelted" & "Improper Belt/Restraint")

Monthly Cumulative Totals



Data Source: FARS and VTrans database. VTrans, MW

Legend: 2018 (green triangle), 2019 (black circle), 2020 (pink square), 2021 (orange diamond), 2022 (blue circle), 2023 (green diamond), 2024 (red square), 2025 (purple square)